



SILBER Smart Installation Manual



Lehtoniemen Metalli Oy

Nikkarintie 2

78850 Varkaus

Finland

www.silber.fi

+358 40 480 1179



INSTALLATION MANUAL

SILBER Smart

TABLE OF CONTENTS

1.	NOTICE WHEN INSTALLING THE FENCE	2
2.	INSTALLING THE POSTS	3
3.	INSTALLING THE PIPES	8
4.	ASSEMBLING THE GATE	13
5.	FINNISHING THE FENCE	16
6.	ELECTRIFICATION	17



INSTALLATION MANUAL

SILBER Smart

1. NOTICE WHEN INSTALLING THE FENCE

This is a simple manual to guide you through the installation of Silber fences.
Please do not press aluminium posts directly to the ground with a tractor, or with other machines.
Aluminium posts may bend or break if handled with too much power.

Please store the pipes indoors. Dirty water and snow (with dust or pollen) may cause dark stripes to the pipes if the water stands long time between the packaged pipes.

Tools you need.

- iron saw
- pinch bar
- hammer
- power drill + 5mm drill bit + phillips + torx head + countersink head
- 24 wrench tool
- 14 mm hex key,
- 10 mm socket wrench
- tape measure and twine rope.

2. INSTALLING THE POSTS

1



About 40 -100 cm hole to the ground

2



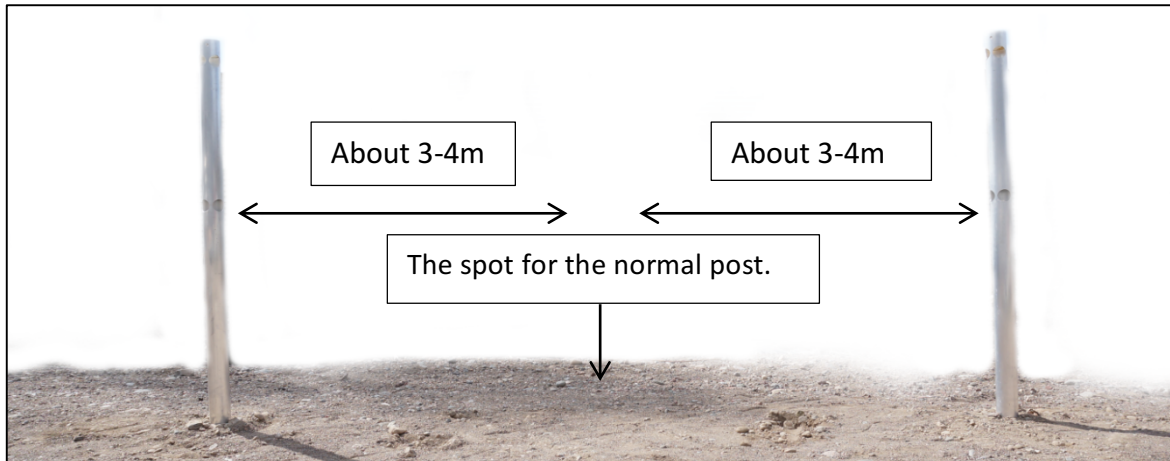
3



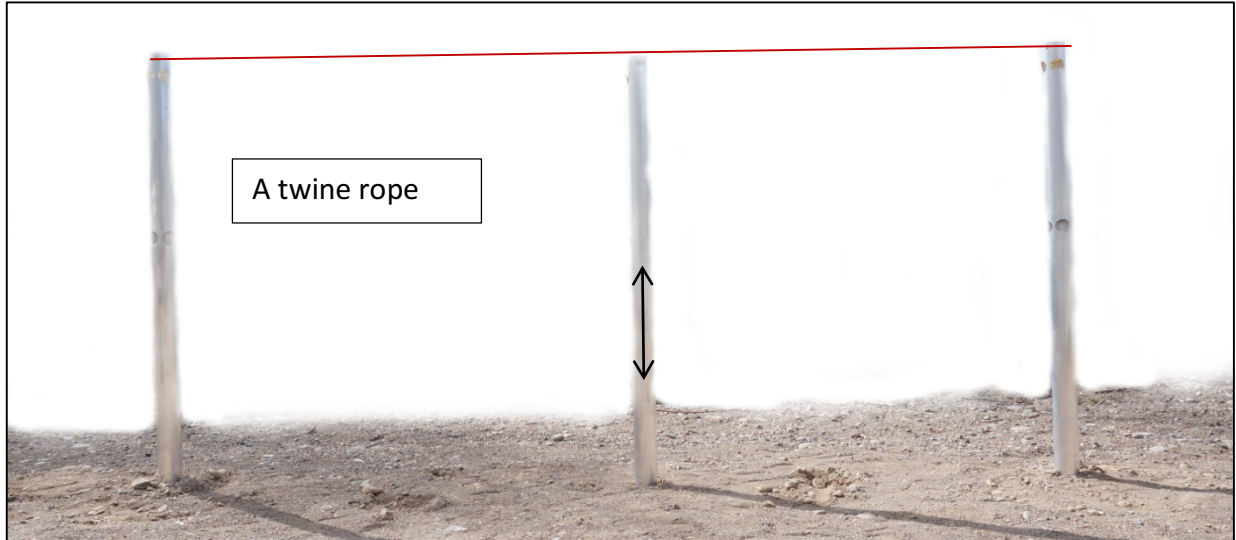
Nylon pipe cover

First, make about 40-70 cm (fence with 2 meter posts) or 40-100 cm (fence with 2,3 meter posts) deep holes to the ground for the corner posts with a power drill or pinch bar (1). Depth depends on the fence model and the quality of the soil. Put the nylon cover on the top of the post before hammering.

Please notice! Do not put cement to the corner posts at the beginning, because a small tilt/incline helps you when placing the horizontal rails.



Divide the space between the corner posts to 3-4 meter sections.



Install a twine rope between the corner posts to see the installation height for the middle posts. If the rope is long, support it a little bit in the middle, so that it does not hang. Then set the posts to the correct depth. If the post hits a stone, you can look for a better place in the line direction of the twine rope.

INSTALLATION MANUAL

SILBER Smart



3. INSTALLING THE PIPES



Attachement of the horizontal rails

Place the horizontal rails to their places (1). Please notice that there must be an insulator part for every hole (2). Place the corner attachment part inside the corner posts (3). Connect the horizontal rails with straight attachment parts (small picture 5).

Small picture 5: Connect the horizontal rails with a straight connector piece (1). Use screws to attach the connection part (2). Turn the socket facing the ground.

INSTALLATION MANUAL

SILBER Smart



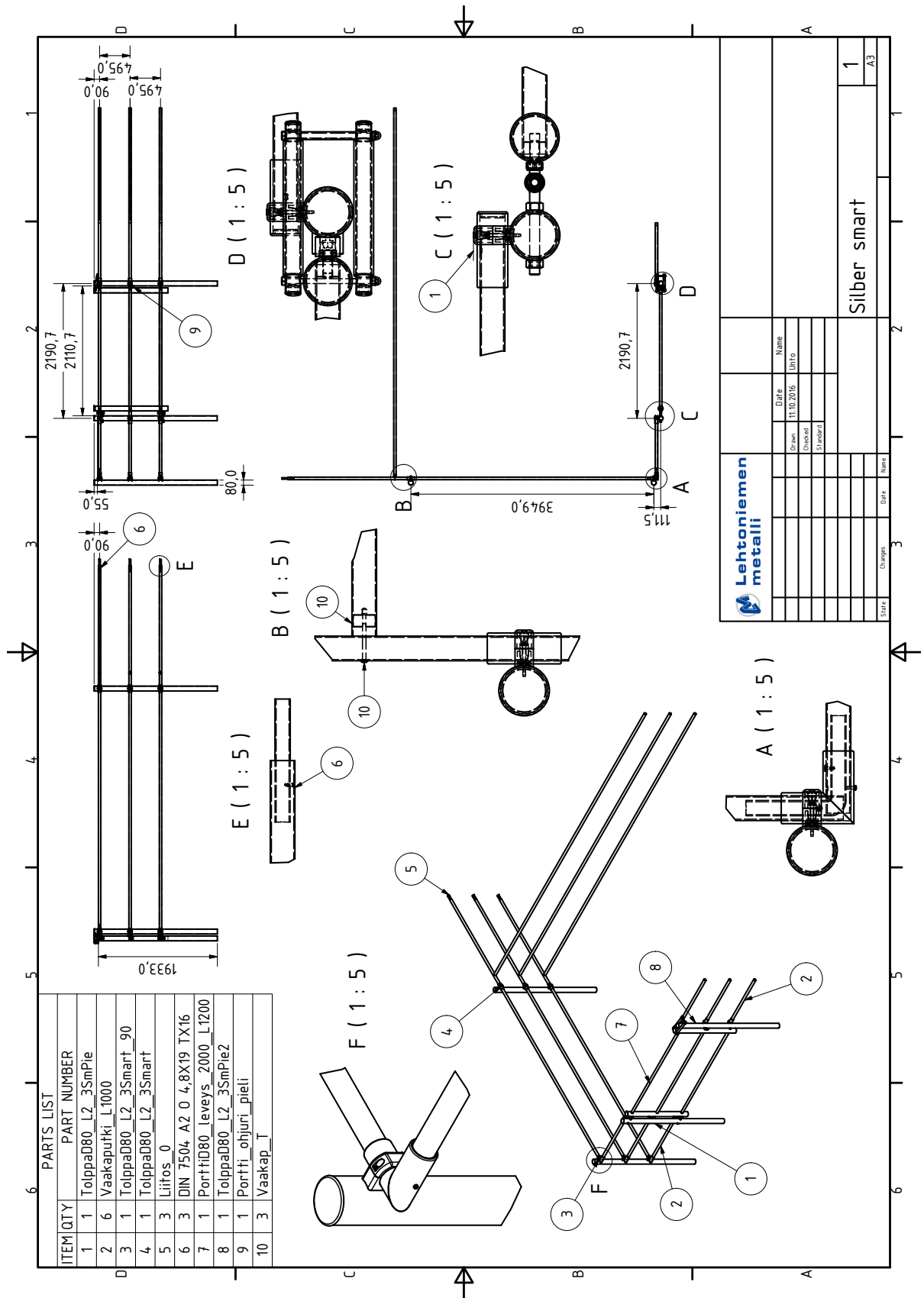
INSTALLATION MANUAL

SILBER Smart



INSTALLATION MANUAL

SILBER Smart

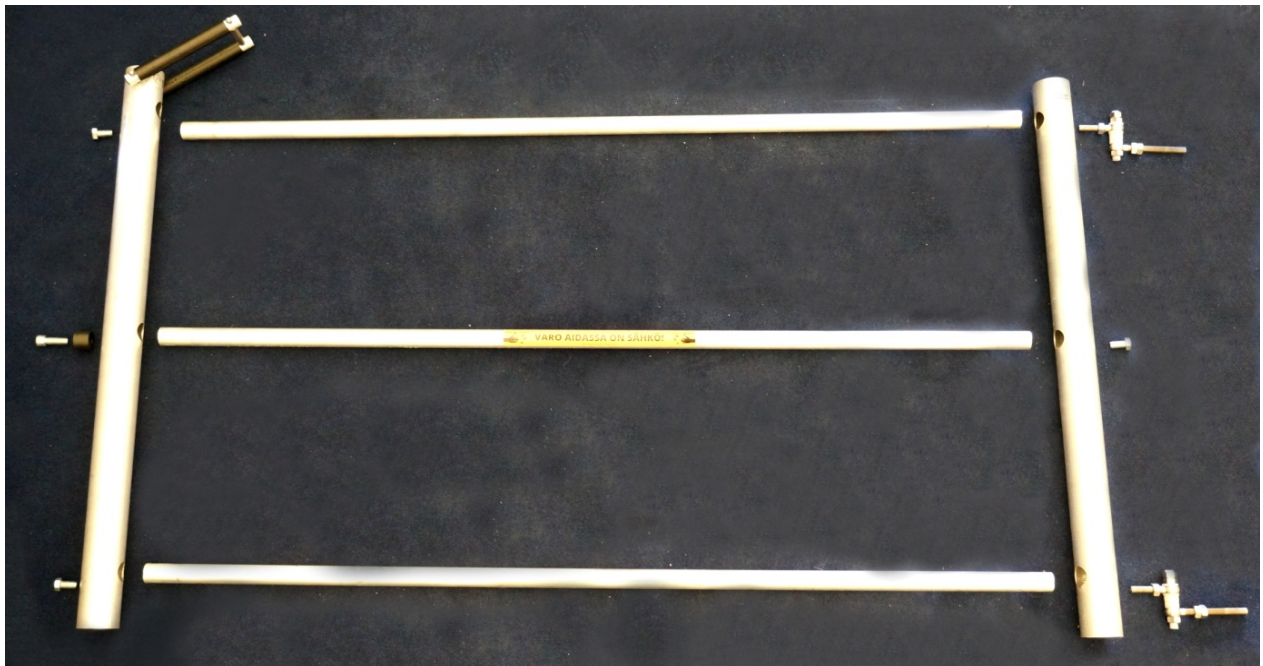




SPECE FOR THE GATE

Leave 13-14 cm extra space for the hinges and for the support parts. Please notice that when using 4m wide leaf gate the additional space that is needed is around 38cm.

4. ASSEMBLING THE GATE



Parts used in the gate will come in one package. The horizontal pipes on the gate have aluminium parts for the bolts on both sides. Following the picture assemble hinges, bolts (22 mm), latch and the support part (with 14 mm hex key) to their places.

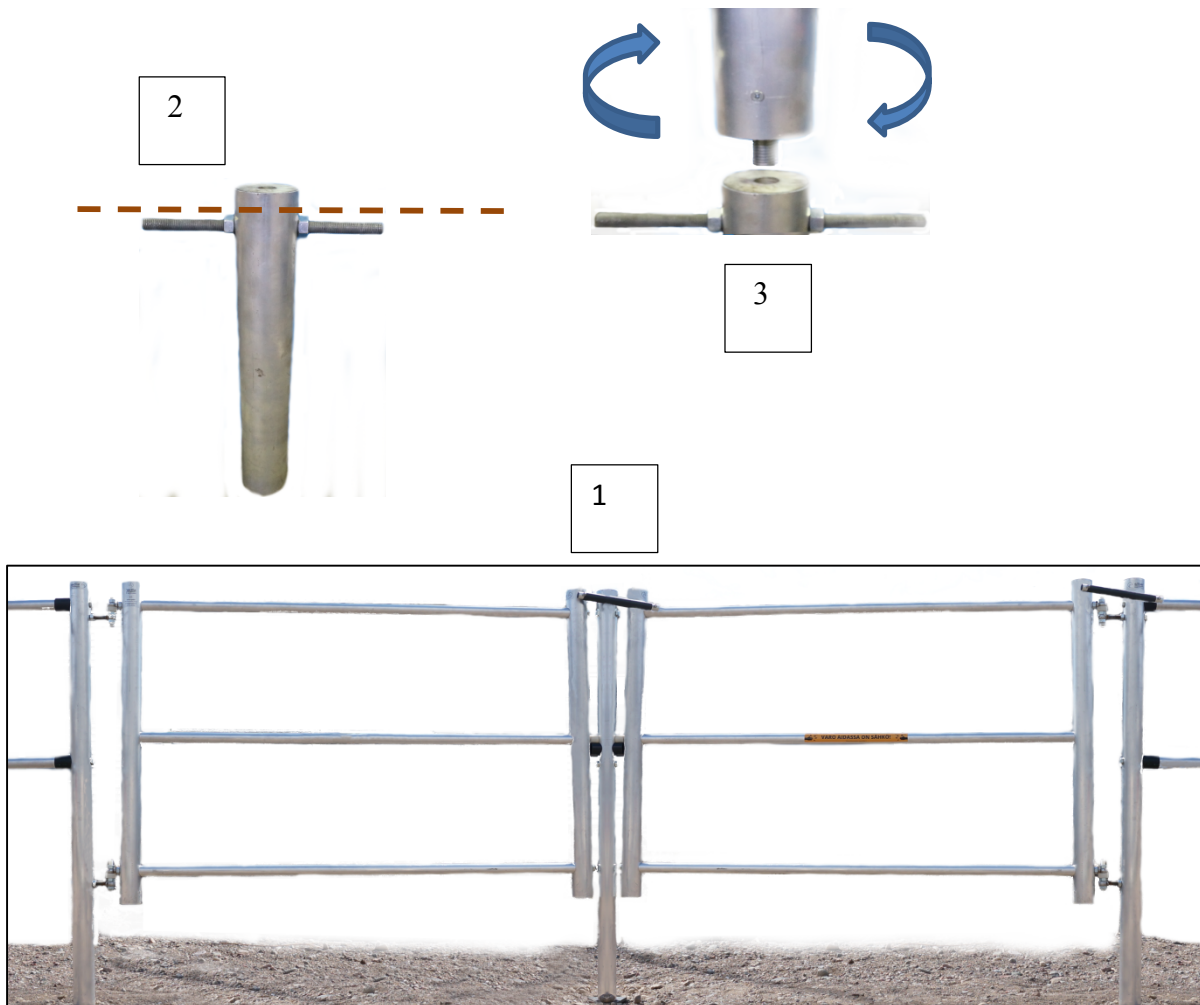


Place the hinges to the gateposts (1). Place the support part of the gate (2) with 10 mm socket wrench.

Please notice that if you have two gates in one paddock and the electricity cannot find another route, you need to place a wire under one gate!

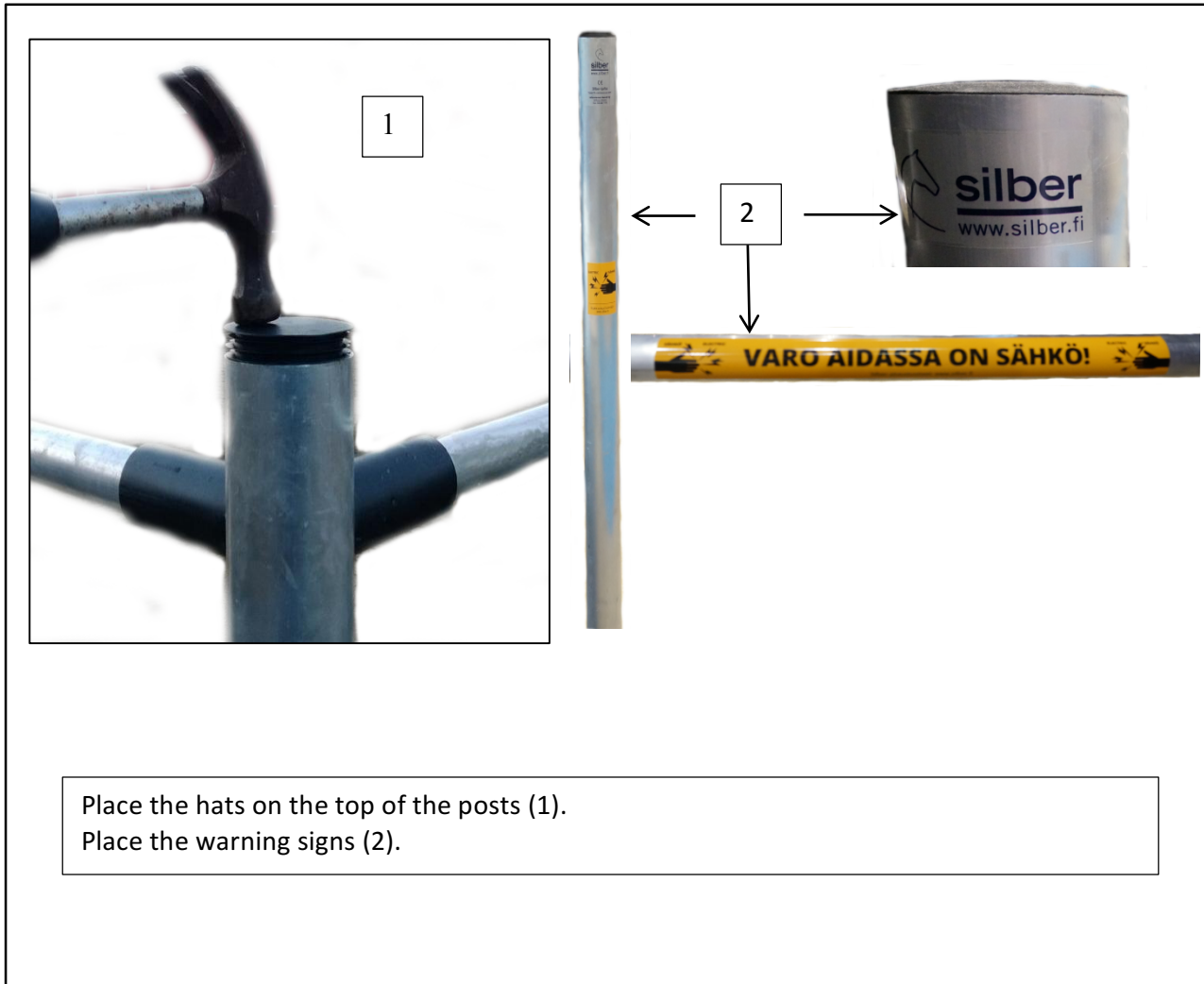
Other option is to install second latch on the hinge side of the gate and have a contact to the fence. (This is due to the hinge side of the gate insulation, which allow the latch interrupt the gate electric by opening it.)

Assembling the leaf gate



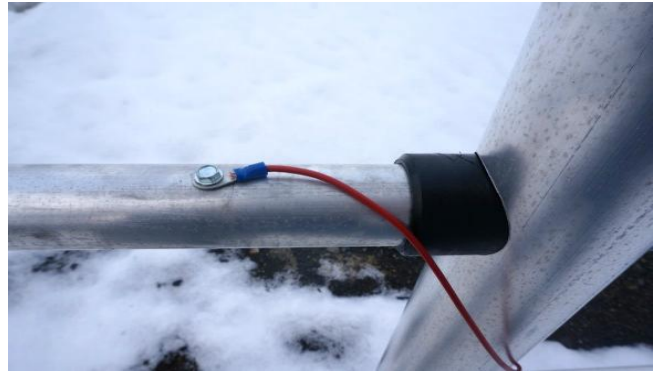
When installing four meter wide leaf gate the space must be left 4,38m. One vertical post in the middle will support the gates (1). A short spiral post must be installed for the vertical post to the ground(2). The end part of the short post is to prevent the post from rotating in the soil. The vertical post is screwed to the short post.

5. FINNISHING THE FENCE



Place the hats on the top of the posts (1).
Place the warning signs (2).

6. ELECTRIFICATION



Connect the energizer to each rail level. Ensure the solid connection of energizer for example with a cable lug and a screw.

**USE ONLY CE-APPROVED ENERGIZER!
MAKE INSTALLATION OF ELECTRONIC
ACCORDING TO MANUFACTURE'S
INSTALLATION INSTRUCTIONS.**

Make the grounding with the instructions of the energizer. Use grounding sticks/poles to make the grounding.



INSTALLATION MANUAL

SILBER Smart

